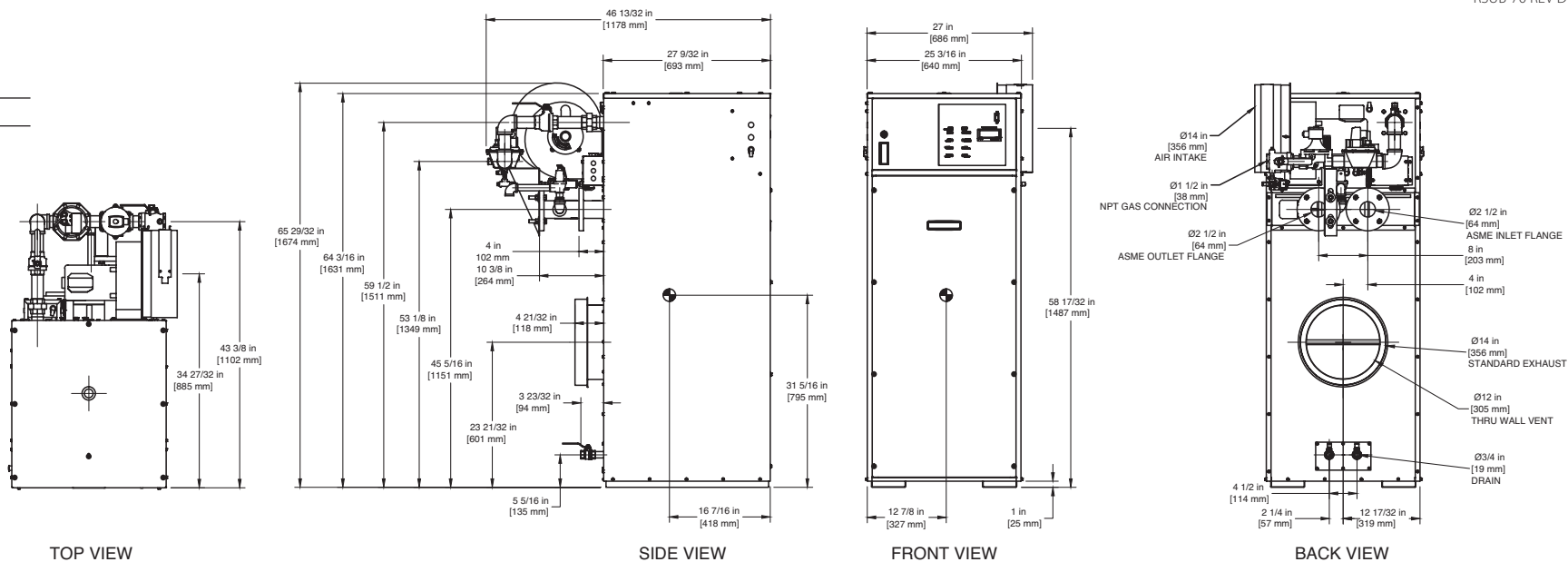


INDOOR UNIT

RSUB-70 REV D

CODE OPTIONS

|       |                   |
|-------|-------------------|
| CSD-1 | Manual Reset LWCO |
|-------|-------------------|



- Notes:
- 1. Dimensions are approximate and should not be used to "rough-in" equipment.
  - 2. Dimensions are subject to change without notice.

BOILER CERTIFIED RATINGS & CAPACITIES

|                         |                        |                            |                    |
|-------------------------|------------------------|----------------------------|--------------------|
| Fuel Type               | Natural/Propane Gas    | Boiler FLA                 | 11.5*              |
| Input BTU/hr.           | 1,950,000 / 571 kW     | Min. Gas Pressure Required | 5"W.C.**           |
| Output BTU/hr.          | 1,657,500 / 486 kW     | Max. Gas Pressure Allowed  | 14"W.C.            |
| Electrical Requirements | 120 VAC / 1 ph / 60 hz | Operating Weight           | 863 lbs. / 392 kg. |

BOILER TEMPERATURE RISE / PRESSURE DROP

| 25°F / 13.9°C |     |               |      | 30°F / 16.7°C |     |               |      | 35°F / 19.4°C |     |               |     |
|---------------|-----|---------------|------|---------------|-----|---------------|------|---------------|-----|---------------|-----|
| Flow Rate     |     | Pressure Drop |      | Flow Rate     |     | Pressure Drop |      | Flow Rate     |     | Pressure Drop |     |
| GPM           | L/s | Ft            | kPa  | GPM           | L/s | Ft            | kPa  | GPM           | L/s | Ft            | kPa |
| 132.6         | 8.4 | 5.14          | 15.1 | 110.5         | 7.0 | 3.70          | 10.8 | 94.7          | 6.0 | 2.80          | 8.1 |

BOILER / WATER HEATER TRIM & CONTROLS

|                           |                    |                   |                           |
|---------------------------|--------------------|-------------------|---------------------------|
| Main Gas Valve            | V4944B             | Main Ball Valve   | 1 1/2"                    |
| Firing Valve              | 1 1/2"             | Pilot Regulator   | White-Rodgers 25M         |
| Safety Valve              | ASCO L8214G 1 1/2" | Air Switch        | HUBA                      |
| Ignition Control          | Honeywell RM7897C  | Blower Motor      | Marathon 3/4 hp - FLA 9.8 |
| Operating Control (FB/FW) | Jumo               | Relief Valve - FB | 1" x 1 1/4" set @ 50 psi  |
| High Limit                | Honeywell L4008E   | Relief Valve - FW | 3/4" x 3/4" set @ 125 psi |
|                           |                    | Flow Switch       | TACO                      |

WATER HEATER HOURLY RECOVERY CAPACITY (GPH & LPH)

|      |       |      |       |      |      |       |      |       |      |       |      |
|------|-------|------|-------|------|------|-------|------|-------|------|-------|------|
| 40°F | 22°C  | 60°F | 33°C  | 80°F | 44°C | 100°F | 56°C | 120°F | 67°C | 140°F | 78°C |
| 4976 | 18809 | 3317 | 12539 | 2488 | 9405 | 1990  | 7524 | 1659  | 6270 | 1422  | 5374 |

Boilers & Water Heaters not available for sale in Canada due to NRCan regulations.

A.S.M.E.

|                          |                               |             |                       |
|--------------------------|-------------------------------|-------------|-----------------------|
| ASME Sect IV Htg Surface | 215.98 Sq. Ft. / 20.06 Sq. M. | Design Data | Max. 160 psig & 250°F |
| Water Volume             | 5.7 gal / 21.6 Liters         |             |                       |

- \* Add circulator amps.  
\*\* For incoming gas pressures lower than 5" W.C. natural or 11" W.C. propane, consult factory.

REP FIRM \_\_\_\_\_

SUBMITTED BY \_\_\_\_\_

JOB NAME \_\_\_\_\_

ARCHITECT \_\_\_\_\_

ENGINEER \_\_\_\_\_

CONTRACTOR \_\_\_\_\_

DATE \_\_\_\_\_

## FUTERA II 1950

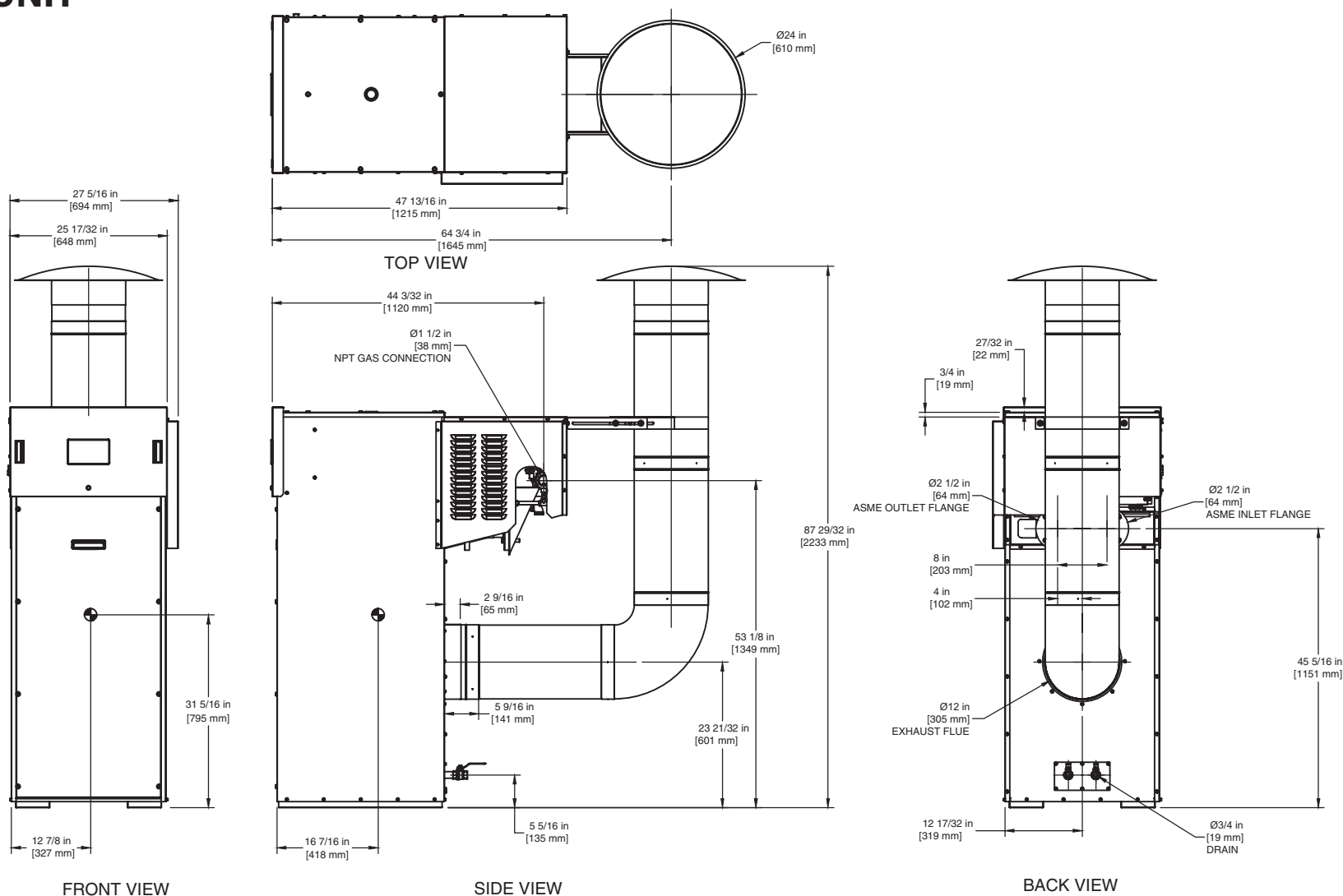
Category I or Category III Appliance  
(see Installation and Operation Manual for venting information)

**RBI**® A Division of Mestek, Inc.  
Westfield, MA 01085  
(413) 568-9571

RELIABLE. BOLD. INNOVATIVE.

# OUTDOOR UNIT

RSUB-157



**Boilers & Water Heaters not available for sale in Canada due to NRCan regulations.**

**Notes:**

1. Dimensions are approximate and should not be used to "rough-in" equipment.
2. Dimensions are subject to change without notice.

**FUTERA II 1950**